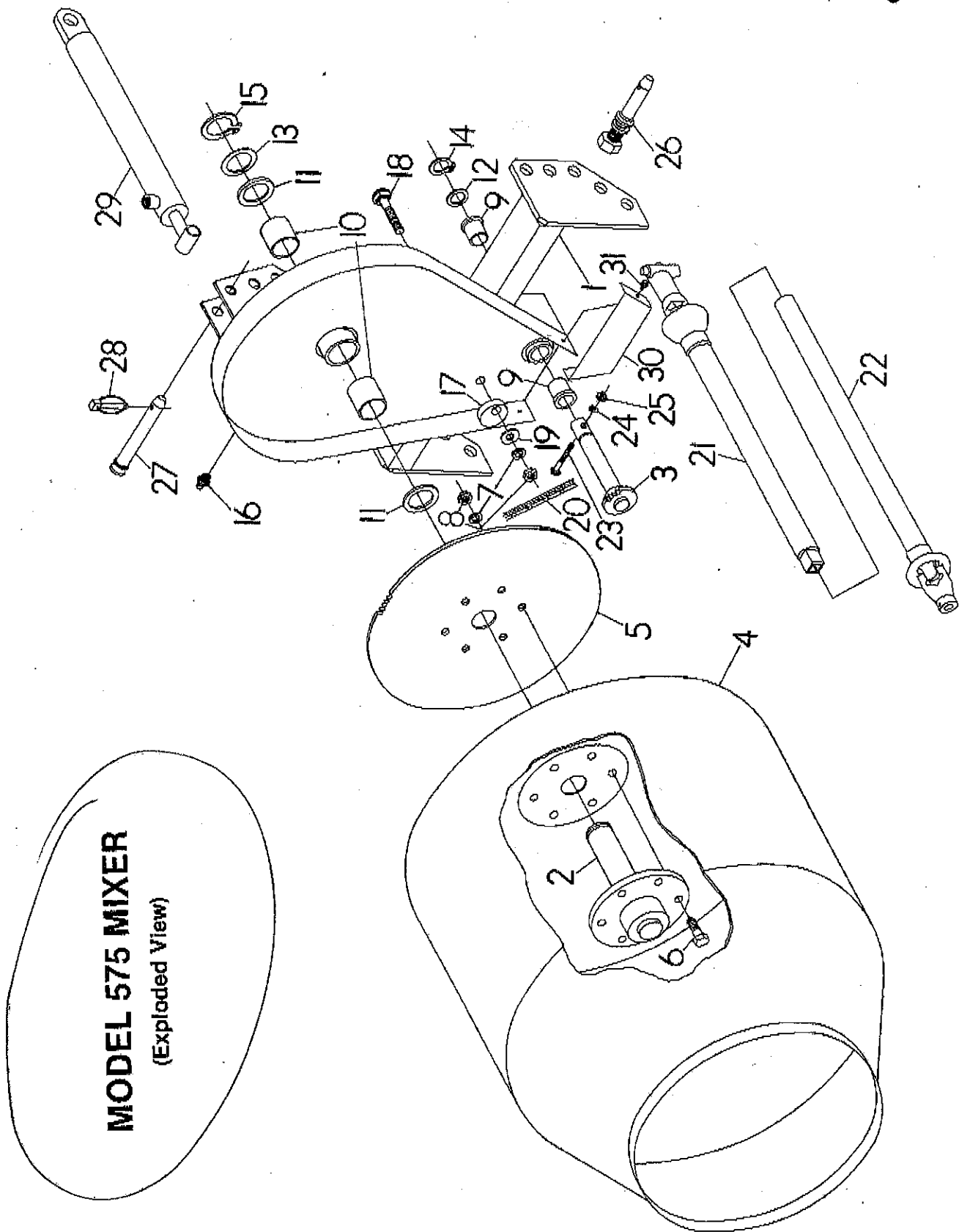


MODEL 580 MIXER PARTS LIST

Ref. No.	Workover Part No.	Description	AGR Code No.	No. Req'd.
1	780621	Drum, Main	BM32001	1
2	780622	Drum, Cone	BM32002	1
3	780623	Paddle, Mixing	BM32014	3
4	2503277	Bolt, M14 x 30 Gr.8.8 Hex Head	52391430	2
5	2502021	Washer, M14 External Star	1751A14Z	2
6	780627	Washer, Inner	BM32003	1
7	2503269	Bolt, M12 x 25 Gr.8.8 Hex Head	52391225	6
8	2501027	Washer, M12 Flat	659212ZN	3
9	2503269	Bolt, M12 x 25 Gr.8.8 Hex Head	52391225	6
10	2501027	Washer, M12 Flat	659212ZN	6
11	2500086	Nut, M12 Hex	558810ZN	8
12	2503278	Bolt, M8 x 16 Gr.8.8 Hex Head	52390816	18
13	2501029	Washer, M8 Flat	659208ZN	36
14	2500088	Nut, M8 Hex	558808ZN	18
15	780624	Chain, #40 (142 Pitches)	CAT12142	1
16	780625	Sprocket Assembly, Drum	BM32005	1
17	780626	Key, 14 x 9 x 50mm	66040750	1
18	780628	Shaft, Drum	BM32009	1
19	780629	Bearing, Ball 6209-2RS	62092RS0	2
20	780630	Frame	BM32004	1
21	780631	Cotter Pin	80100510	4
22	780632	Pin, Cylinder	BM32012	2
23	780633	Bar, Cylinder Attachment	BM32025	2
24	780634	Bushing, Cylinder	BM3201907	1
25	780635	Cylinder, Hydraulic-Toplink	BM32019	1
26	780636	Hose, Hydraulic	30015075	1
27	2503279	Bolt, M10 x 90 Gr.8.8 Hex Head	52371090	2
28	2502019	Washer M10 x 30	659310ZN	4
29	2500089	Nut, M24 Hex	558824ZF	2
30	2502022	Washer, M24 Springlock	175124ZN	2
31	780637	Pin, Pull	S5051008	2
32	780638	Knob, M8 x 20	VB408150	2
33	780639	Washer, Drum Shaft Retainer	BM32008	1
34	780640	Snap Ring, E D 30	74353000	2
35	780641	Bearing, Ball 6200-2RS	62062RS0	2
36	780642	Support, Drive Shaft	BM32006	1
37	780643	Shaft, Drive w/Sprocket	BM32007	1
38	780644	Tube, Stand	BM32010	2
39	780645	Plug, Stand Tube	TCP3200	2
40	780646	Guard, Drive Shaft	BM32011	1
41	2503278	Bolt, M8 x 16 Gr.8.8 Hex Head	52390816	2
42	780647	PTO Shaft 'CE' Standard	C31700CE1	1
43	2503280	Bolt, M10 x 50 Socket Head	59321050	1
44	2500090	Nut, M10 Nylock Hex	747310ZN	1
45	2501027	Washer, M12 x 30 Flat	659312ZN	3
46	2501026	Washer, M24 Flat	659224ZN	2
47	2500091	Nut, M8 Whiz Flange Hex	559006ZN	2
48	780648	Guard, PTO	BM32030	1
49	780649	Support, PTO Guard	BM32015	2
50	2501029	Washer, M8 Flat	659208ZN	2
51	2503278	Bolt, M8 x 16 Gr.8.8 Hex Head	52390816	2
52	2503281	Bolt, M8 x 20 Gr.8.8 Hex Head	52390820	2
N/S	780776	Masterlink, #40 Chain		1

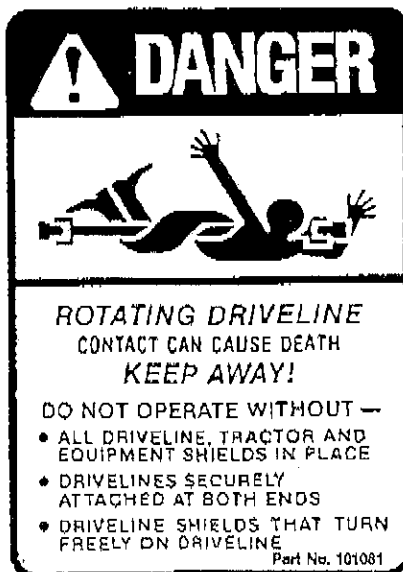
575 MIXER



MODEL 575 MIXER
(Exploded View)

REPAIR PARTS LIST - 575 MIXER			
REF. NO.	PART NO.	DESCRIPTION	NO. REQ'D.
1	780738	Main Frame Weldment	1
2	780763	Drive Shaft Assembly - Drum	1
3	780766	Drive Shaft Assembly with Sprocket 40B-13	1
4	780769	Drum Assembly - 5 Cubic Ft.	1
5	780771	Sprocket - 40A112	1
6	2503006	Bolt, $\frac{3}{8}$ " - 16 N.C. x $1\frac{1}{2}$ " Hex Head	6
7	2502008	Lockwasher, $\frac{3}{8}$ "	7
8	2500004	Nut, $\frac{3}{8}$ " - 16 N.C. Full Hex	7
9	780714	Flange Bearing, 1" I.D. Bronze	2
10	863013	Bronze Bearing, $1\frac{3}{4}$ " I.D.	2
11	780772	Thrust Bearing, $1\frac{3}{4}$ " I.D.	2
12	2504110	Machinery Bushing, 1" I.D.	1
13	2504111	Machinery Bushing, $1\frac{3}{4}$ " I.D.	1
14	2504045	Retaining Ring, 1"	1
15	2504046	Retaining Ring, $1\frac{3}{4}$ "	1
16	2504049	Drive Zerk, $\frac{3}{8}$ "	2
17	780773	Chain Tightener - Plastic Block	1
18	2503143	Bolt, $\frac{3}{8}$ " - 16 N.C. x $3\frac{1}{4}$ " Carriage Head	1
19	2501004	Flatwasher, $\frac{3}{8}$ "	1
20	780775	Chain, No. 40 Roller (68 $\frac{1}{2}$ ")	1
21	491054	PTO Shaft (Tractor End) Half	1
22	491055	PTO Shaft (Implement End) Half	1
23	2503098	Bolt, $\frac{3}{8}$ " - 18 N.C. x $2\frac{1}{2}$ " Hex Head	1
24	2502011	Lockwasher, $\frac{3}{8}$ "	1
25	2500011	Nut, $\frac{3}{8}$ " - 18 N.C. Full Hex	1
26	590108	Cat. I Forged Draw Pin (AK-578)	2
27	590001	Cat. I Top Link Pin (AK-8)	1
28	590006	Linchpin (AK-14) $\frac{3}{8}$ "	1
29	780852	Hydraulic Cylinder, $1\frac{3}{4}$ " x 14" Single Acting	1
30	780778	Lower Shield	1
31	2503182	#10 - 32 UNF x $\frac{1}{2}$ " Hex Head Screw	2
NS	101081	Decal - PTO Danger	1
NS	101027	Decal - Warning	1
NS	101029	Decal - Caution! PTO Off	1

491053 Compl. PTO BLACK SQ. SHAFT



**Obey All
Safety Warnings**